



SAHEB

DIGITAL PARKING TILES



2020
New Collection

About US

Space can become a symbol of comfort when **Saheb Ceramic PVT. LTD.** Provides new ideas for decoration your home. With special format like **300 x 300mm**, in Parking tiles, which seem to enlarge available space and enhance the concept of living quality.

Saheb Ceramic PVT. LTD. Produces Parking tiles, with more then 100 designs in various Our innovation never stops and all products are being produced strictly in accordance with international standards and national standards of India.

Saheb Ceramic PVT. LTD. is in a dominant position in the competitive market resulting from its pricing strategy and persistence in quality.

Saheb Ceramic PVT. LTD. We have imported the latest ceramic production equipments and technology from Italy and Germany.

Saheb Ceramic PVT. LTD. Provides the customers with high quality products and excellent services through the widespread national and international dealer network.

Every phase of the production process in carries out in its whole using advanced technology, in order to guaranty maximum precision in every step of the production processes, obtaining an unbeatable quality for all our products.

Looking to the future, **Saheb Ceramic Pvt Ltd.** Will go hand in hand with all walks of life to create a beautiful tomorrow for modern architectural and decorative ceramic industry based on creating life culture and focusing on personnel, and insisting in the spirit of producing excellent tile with solid work.

Create A World Of Superior Enchantment.



300x300MM

Digital Parking Tiles

Tiles proposes a complete solution for your outdoor or parking tiles with its 300x300mm digital parking tiles range. These floor tiles are made to withstand intense climatic conditions and with their extreme durability, they also inherent beautiful and creative textures to suit any taste.

FEATURES



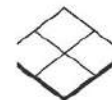
FLOOR TILES



HIGHER THICKNESS



WATER ABSORPTION
←0.10%



RECTIFIED



RESISTANT TO STAINS



ANTISLIP



RESISTANT TO SCRATCHES



HIGHLY UV RESISTANT



EASY TO CLEAN



FROST RESISTANCE



RANDOM TILES



RESISTANCE TO HIGH TEMPERATURES



HEAVY LOAD BEARING



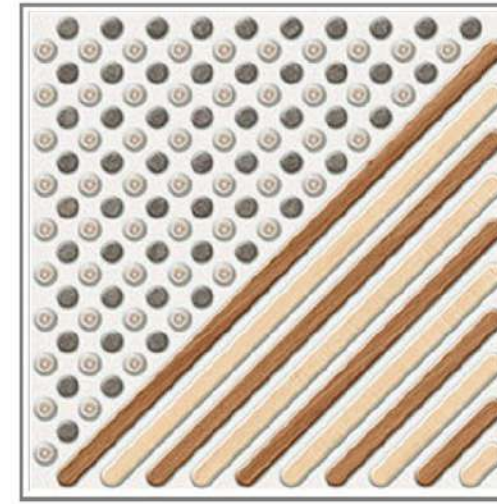
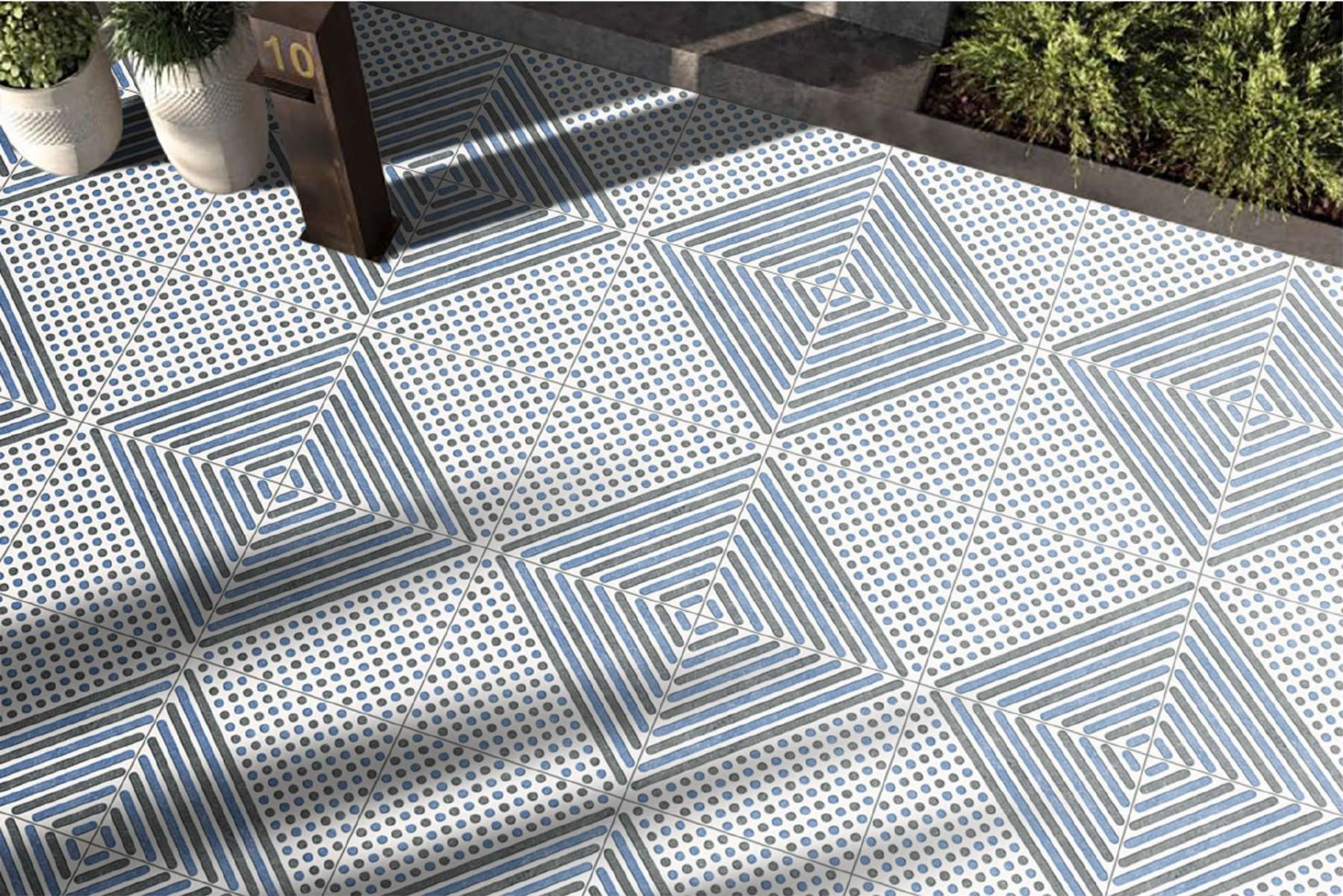
HIGH MECHANICAL RESISTANCE



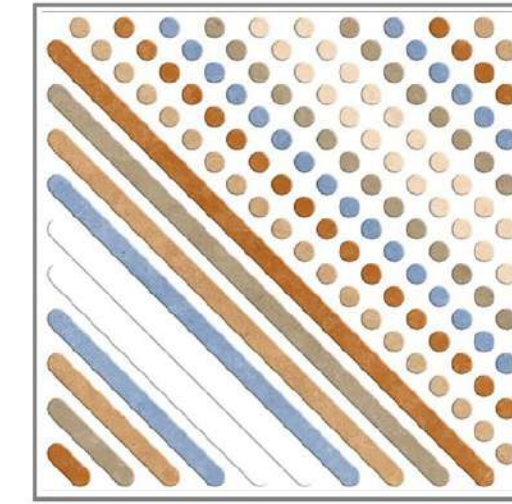
Touch The Perfection

THICKNESS
9.5 MM

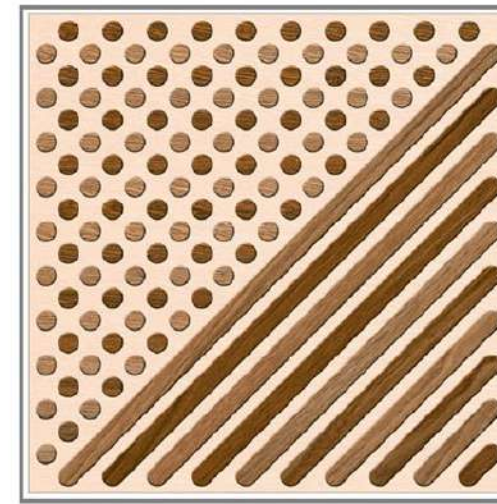
SIZE
300x
300 MM



Design No.: 501

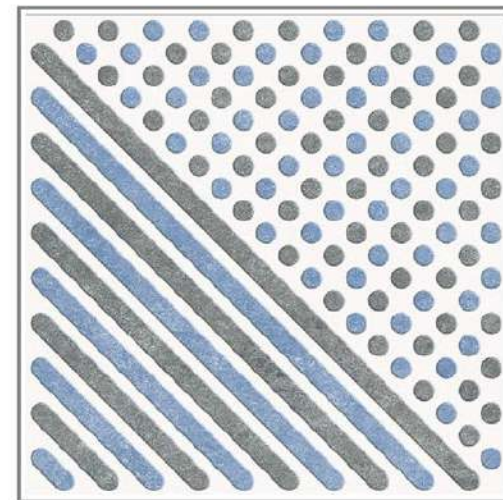


Design No.: 570



Design No.: 583

- Easy to install
- Resistant to Staining
- Thermal shock resistant
- Ecology & Sustainable
- Acid resistant
- Easy to clean
- Anti-slip
- Resistant to Abrasion
- High Mor
- Impact resistant
- Frost resistant



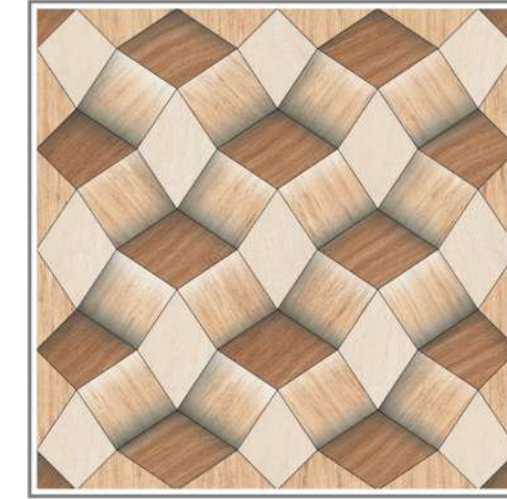
Design No.: 569

THICKNESS
9.5 MM

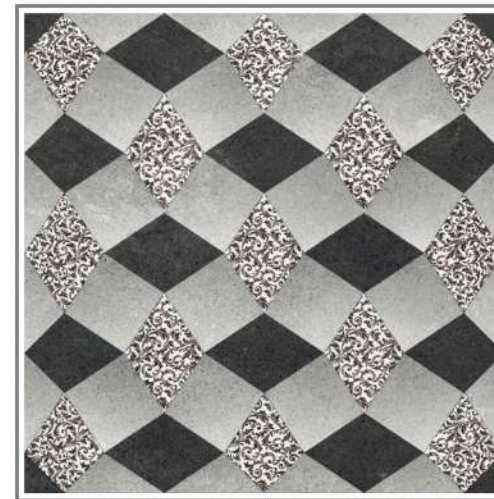
SIZE
300x
300 MM



Design No.: 504

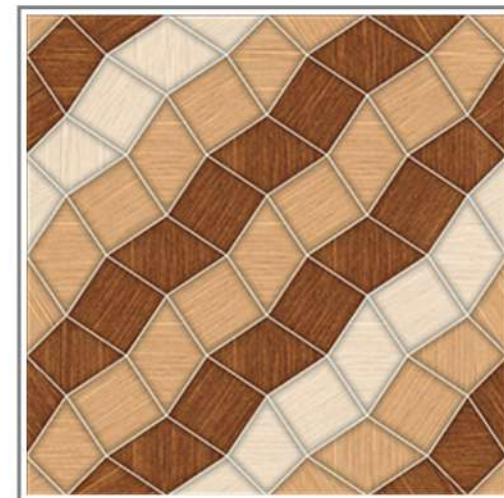


Design No.: 508



Design No.: 522

- Easy to install
- Resistant to Staining
- Thermal shock resistant
- Ecology & Sustainable
- Acid resistant
- Easy to clean
- Anti-slip
- Resistant to Abrasion
- High Mor
- Impact resistant
- Frost resistant



Design No.: 502

THICKNESS
9.5 MM

SIZE
300x
300 MM



Design No.: 503



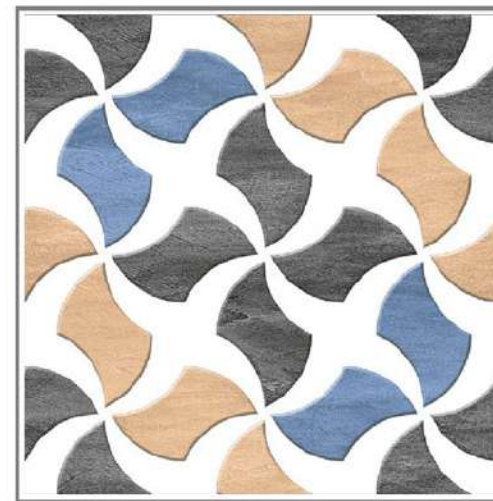
Design No.: 514



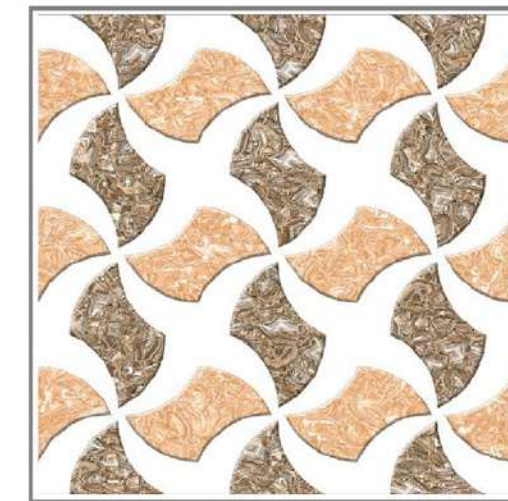
Design No.: 515



Design No.: 558



Design No.: 571



Design No.: 572

- Easy to install
- Resistant to Staining
- Thermal shock resistant
- Ecology & Sustainable
- Acid resistant
- Easy to clean
- Anti-slip
- Resistant to Abrasion
- High Mor
- Impact resistant
- Frost resistant



Design No.: 513

THICKNESS
9.5 MM

SIZE
300x
300 MM



Design No.: 506



Design No.: 553



Design No.: 567



Design No.: 568

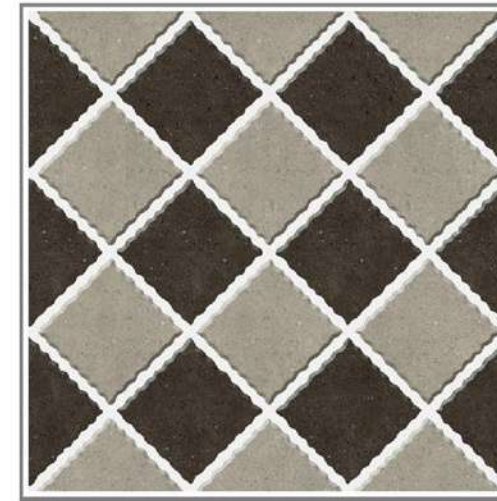
- Easy to install
- Resistant to Staining
- Thermal shock resistant
- Ecology & Sustainable
- Acid resistant
- Easy to clean
- Anti-slip
- Resistant to Abrasion
- High Mor
- Impact resistant
- Frost resistant



Design No.: 505

THICKNESS
9.5 MM

SIZE
300x
300 MM



Design No.: 520

-  Easy to install
-  Resistant to Staining
-  Thermal shock resistant
-  Ecology & Sustainable
-  Acid resistant
-  Easy to clean
-  Anti-slip
-  Resistant to Abrasion
-  High Mor
-  Impact resistant
-  Frost resistant



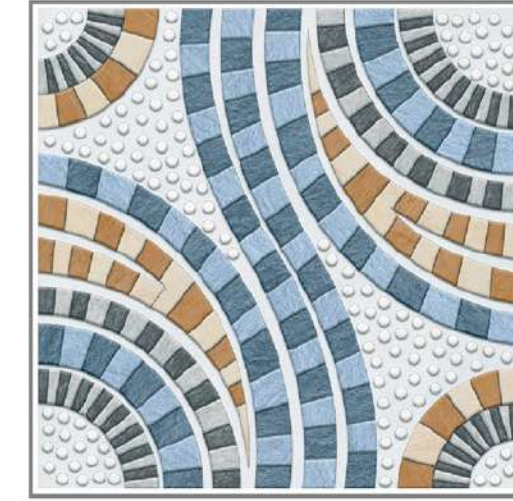
Design No.: 507

THICKNESS
9.5 MM

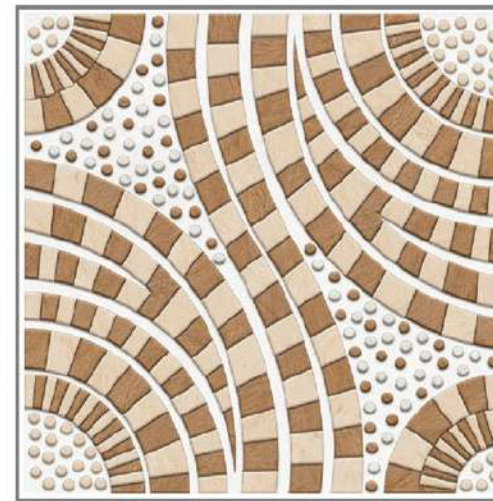
SIZE
300x
300 MM



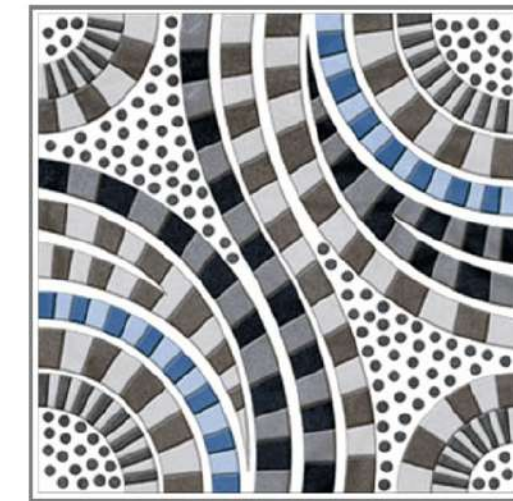
Design No.: 510



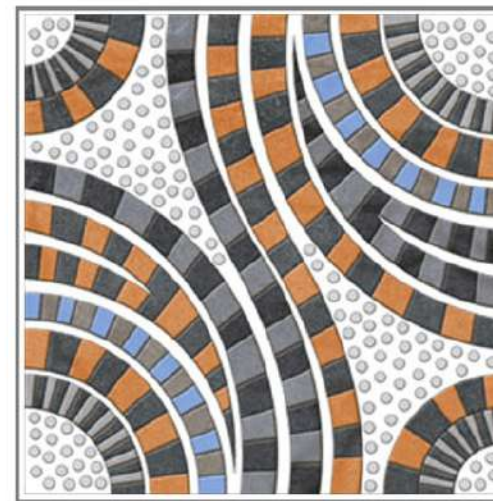
Design No.: 511



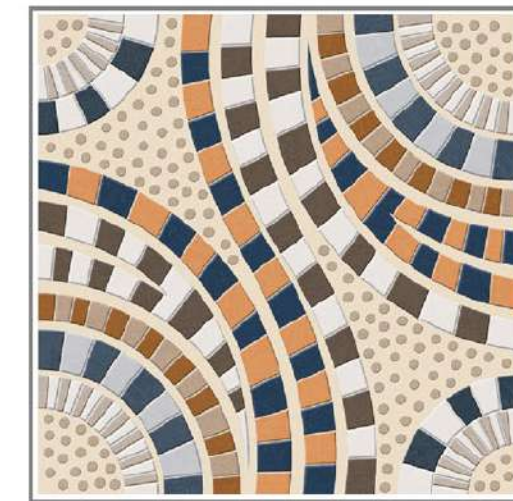
Design No.: 512



Design No.: 555



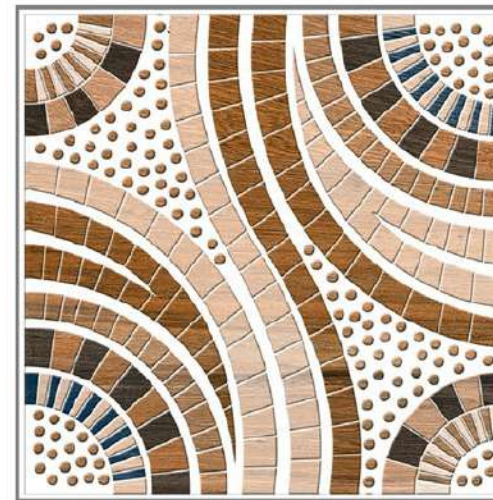
Design No.: 556



Design No.: 557



Design No.: 509



Design No.: 582

- Easy to install
- Resistant to Staining
- Thermal shock resistant
- Ecology & Sustainable
- Acid resistant
- Easy to clean
- Anti-slip
- Resistant to Abrasion
- High Mor
- Impact resistant
- Frost resistant

THICKNESS
9.5 MM

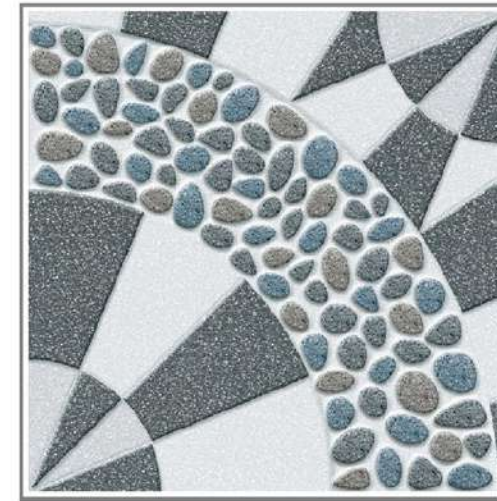
SIZE
300x
300 MM



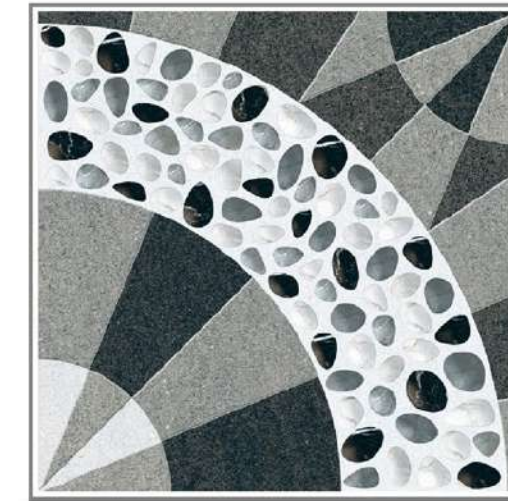
- Easy to install
- Ecology & Sustainable
- Anti-slip
- Impact resistant
- Resistant to Staining
- Acid resistant
- Resistant to Abrasion
- Frost resistant
- Thermal shock resistant
- Easy to clean
- High Modulus



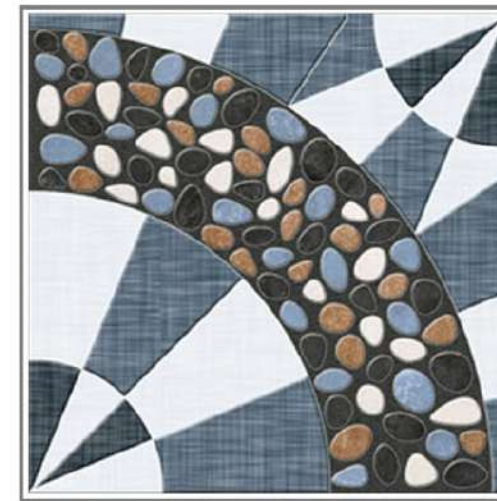
Design No.: 519



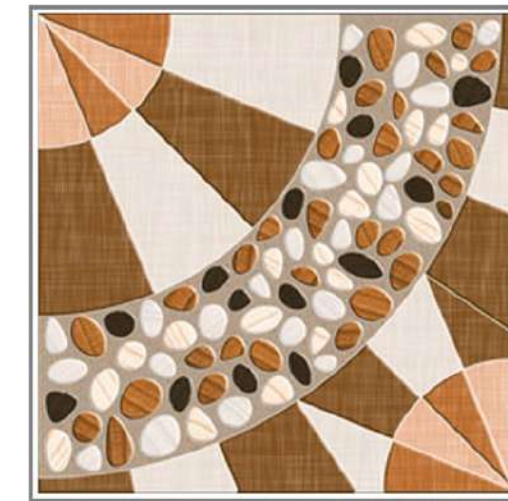
Design No.: 517



Design No.: 518



Design No.: 560



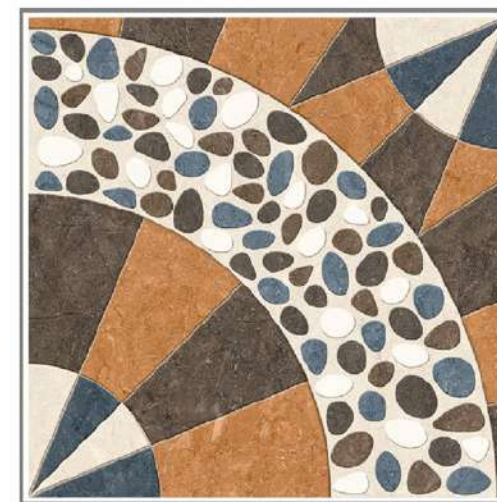
Design No.: 561



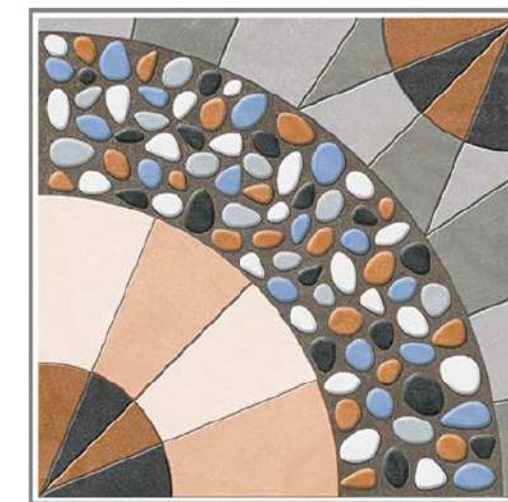
Design No.: 562



Design No.: 563



Design No.: 564



Design No.: 574

THICKNESS
9.5 MM

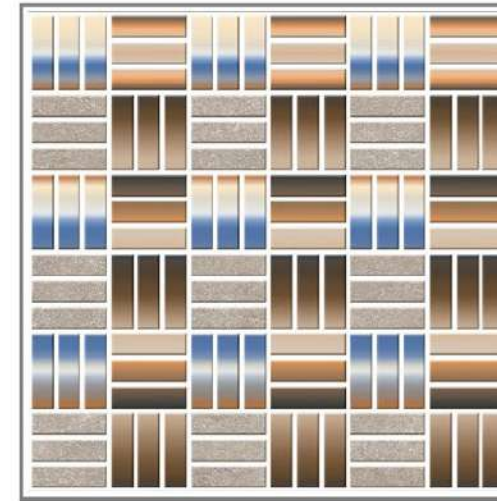
SIZE
300x
300 MM



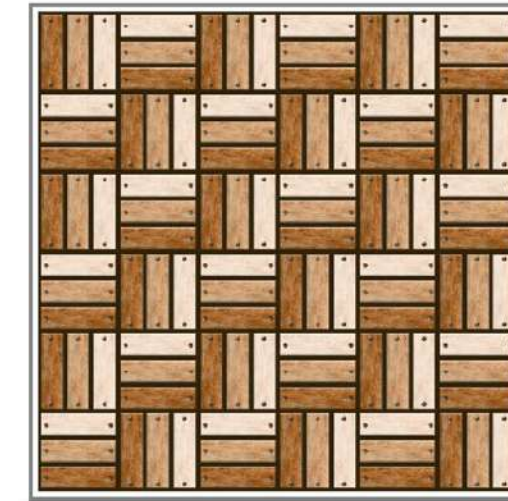
- Easy to install
- Resistant to Staining
- Thermal shock resistant
- Ecology & Sustainable
- Acid resistant
- Easy to clean
- Anti-slip
- Resistant to Abrasion
- High Mor
- Impact resistant
- Frost resistant



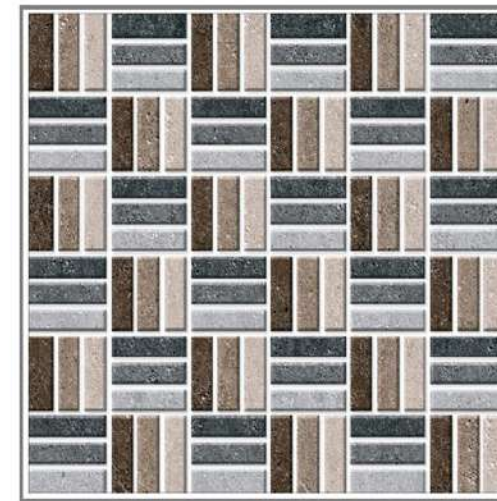
Design No.: 521



Design No.: 565



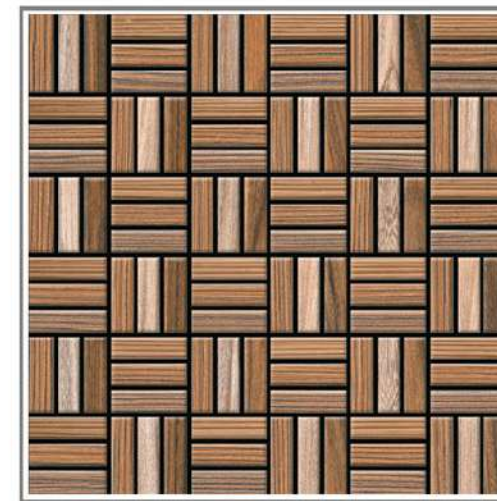
Design No.: 566



Design No.: 588



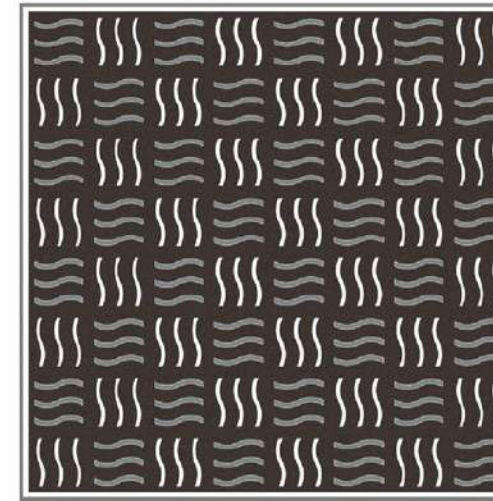
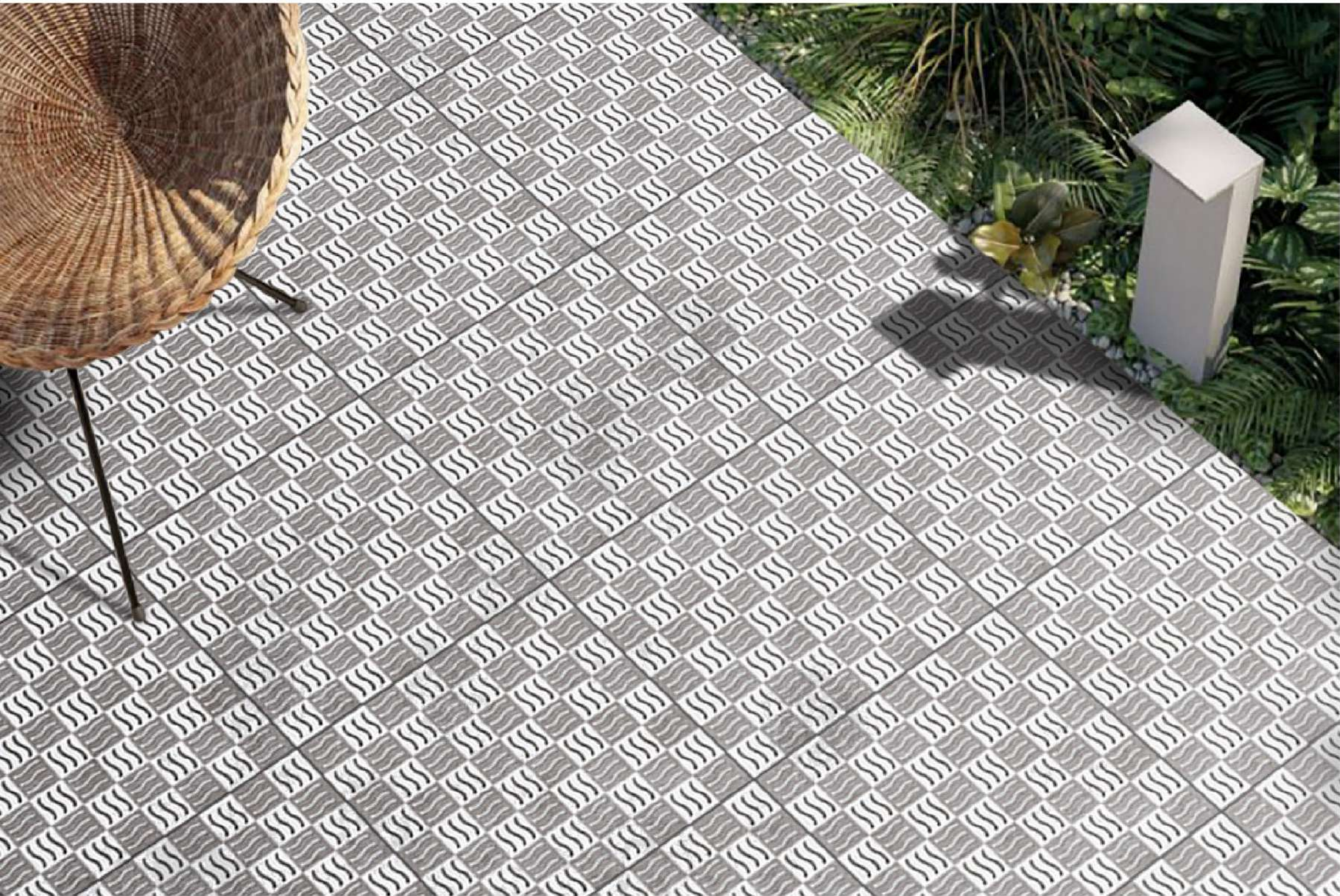
Design No.: 589



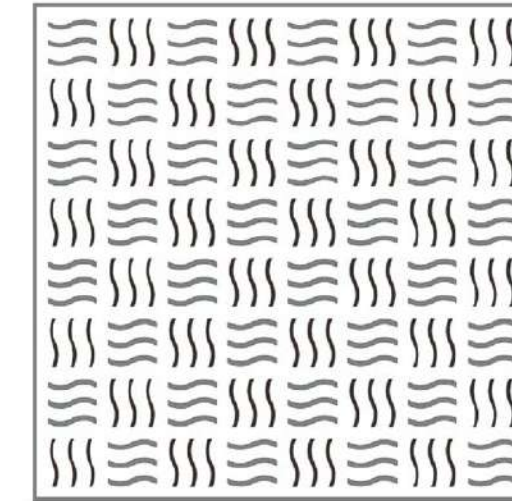
Design No.: 590

THICKNESS
9.5 MM

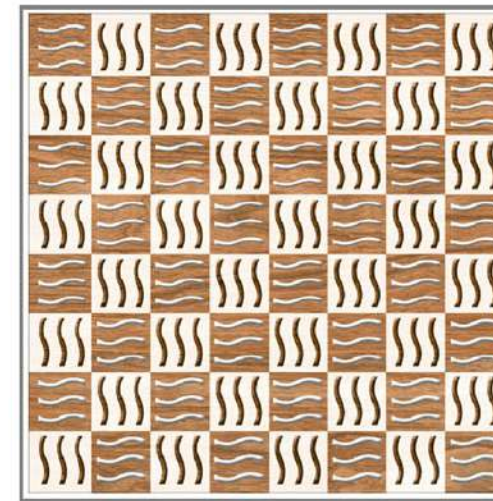
SIZE
300x
300 MM



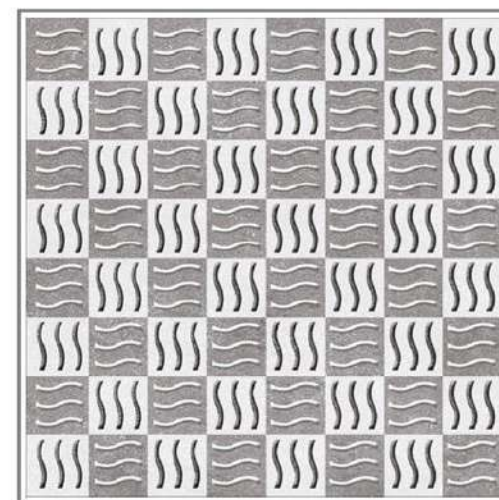
Design No.: 523



Design No.: 527



Design No.: 585

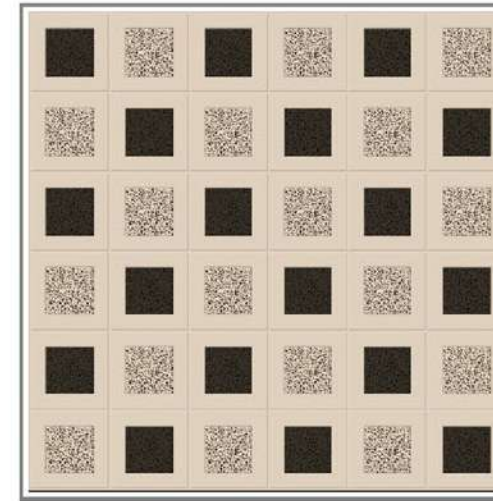
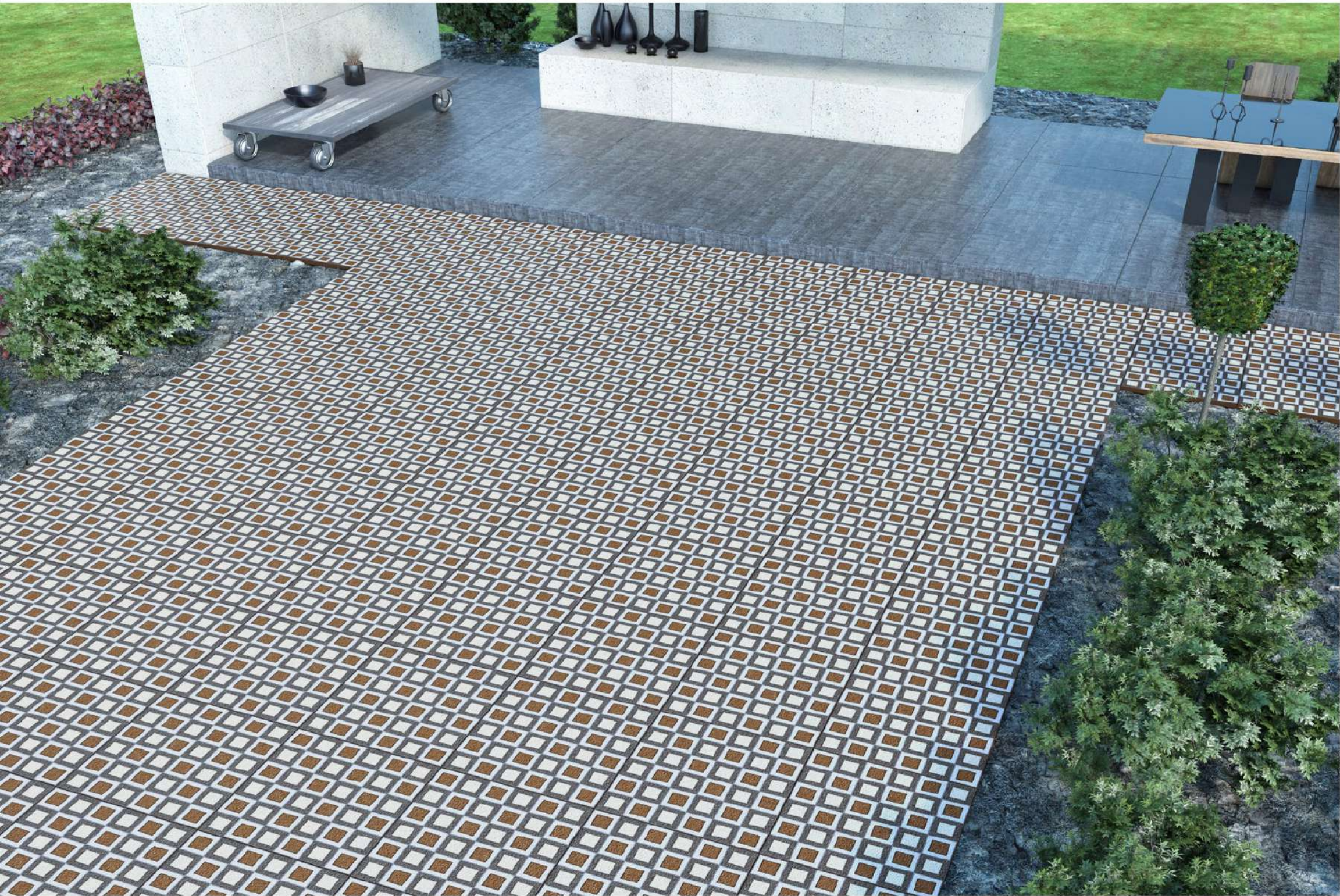


Design No.: 584

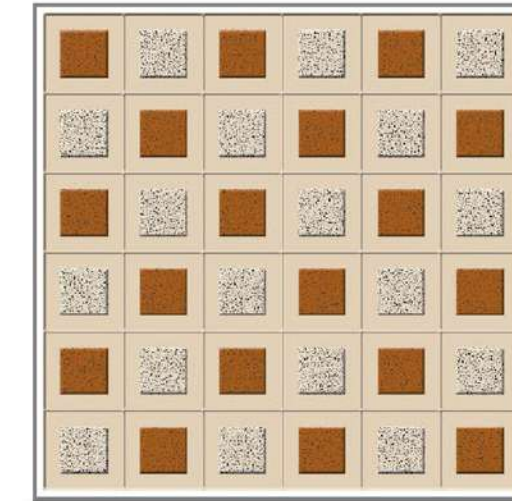
- Easy to install
- Ecology & Sustainable
- Anti-slip
- Impact resistant
- Resistant to Staining
- Acid resistant
- Resistant to Abrasion
- Frost resistant
- Thermal shock resistant
- Easy to clean
- High Mor

THICKNESS
9.5 MM

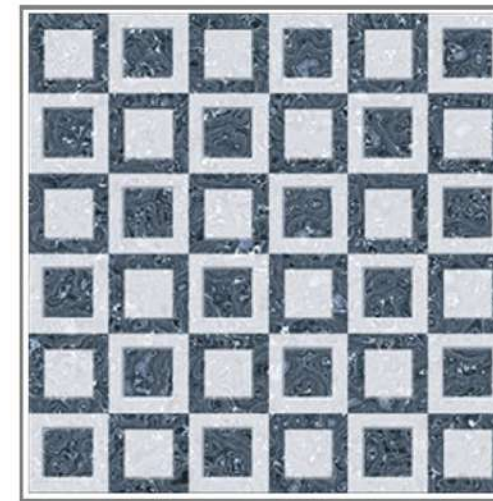
SIZE
300x
300 MM



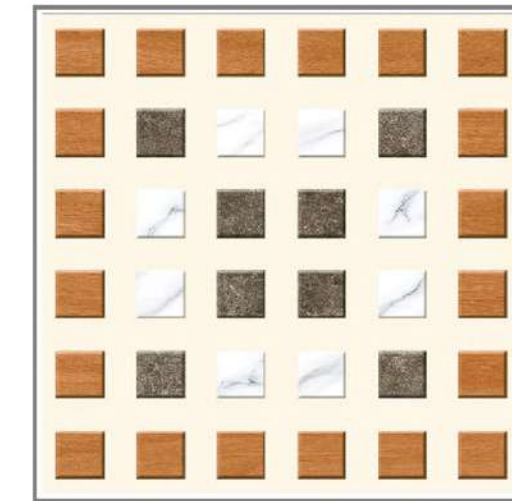
Design No.: 525



Design No.: 526

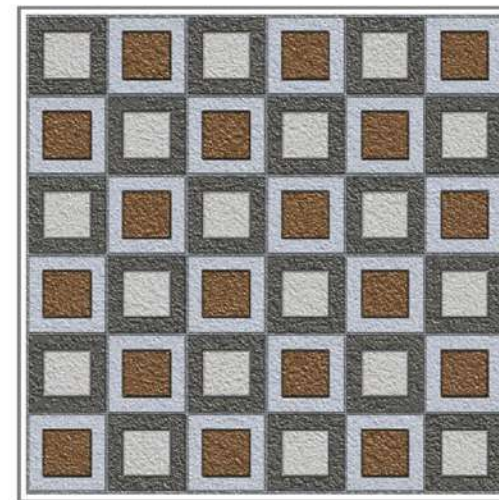


Design No.: 559



Design No.: 573

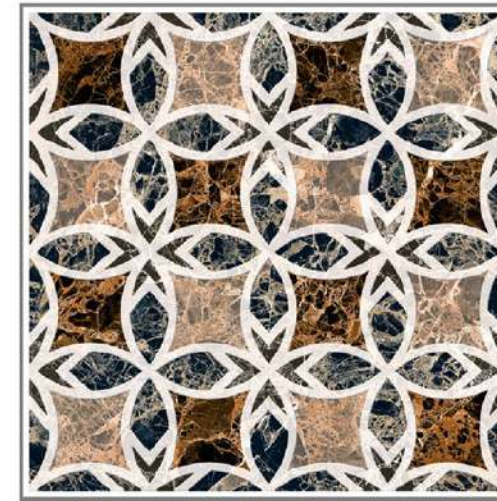
- Easy to install
- Ecology & Sustainable
- Anti-slip
- Impact resistant
- Resistant to Staining
- Acid resistant
- Resistant to Abrasion
- Frost resistant
- Thermal shock resistant
- Easy to clean
- High Mor



Design No.: 524

THICKNESS
9.5 MM

SIZE
300x
300 MM

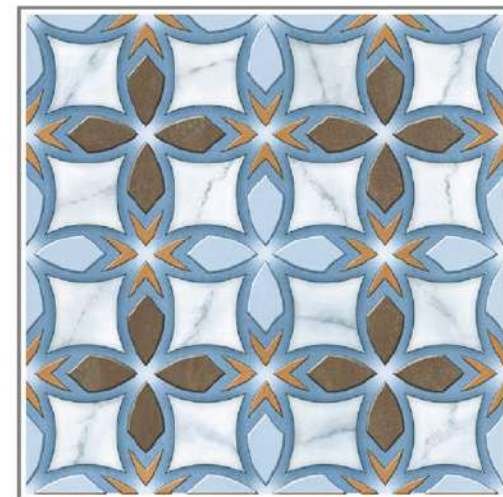


Design No.: 528



Design No.: 529

- Easy to install
- Resistant to Staining
- Thermal shock resistant
- Ecology & Sustainable
- Acid resistant
- Easy to clean
- Anti-slip
- Resistant to Abrasion
- High Mor
- Impact resistant
- Frost resistant



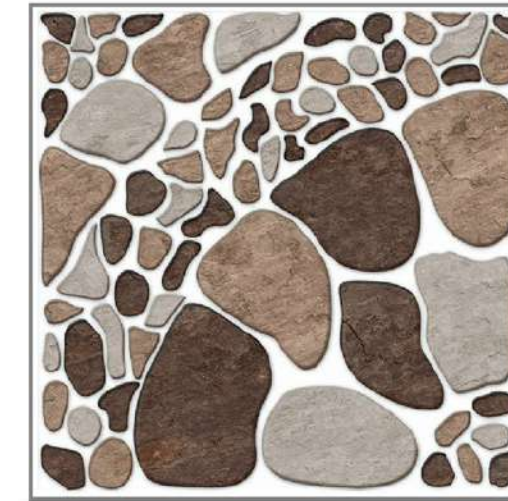
Design No.: 530

THICKNESS
9.5 MM

SIZE
300x
300 MM



Design No.: 532



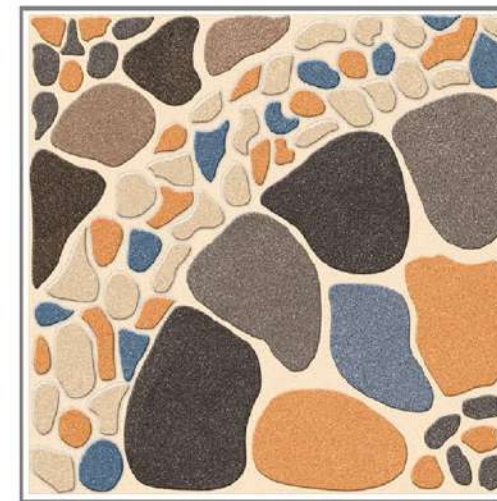
Design No.: 533



Design No.: 534



Design No.: 535



Design No.: 554

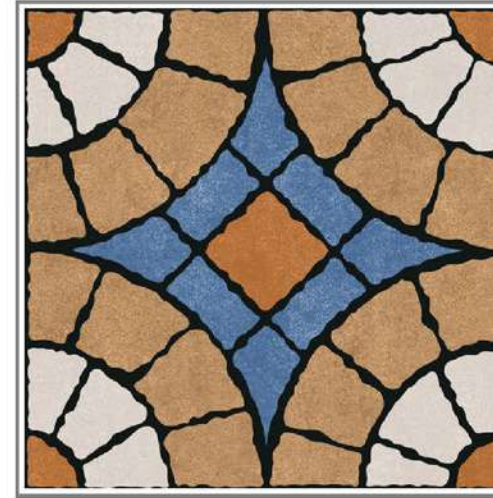


Design No.: 531

- Easy to install
- Resistant to Staining
- Thermal shock resistant
- Ecology & Sustainable
- Acid resistant
- Easy to clean
- Anti-slip
- Resistant to Abrasion
- High Mor
- Impact resistant
- Frost resistant

THICKNESS
9.5 MM

SIZE
300x
300 MM



Design No.: 537



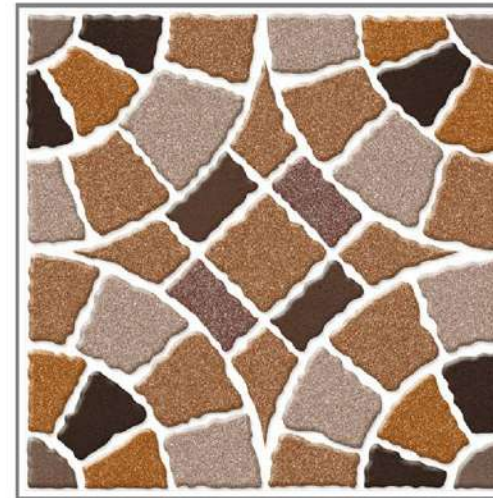
Design No.: 538



Design No.: 539



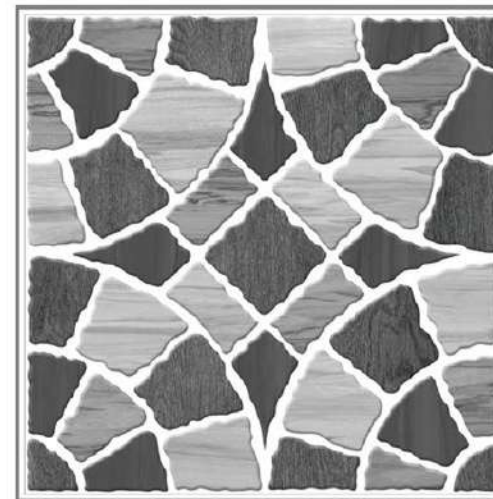
Design No.: 540



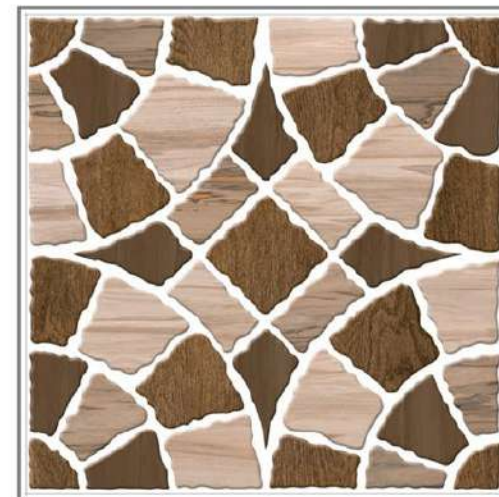
Design No.: 541



Design No.: 542



Design No.: 587

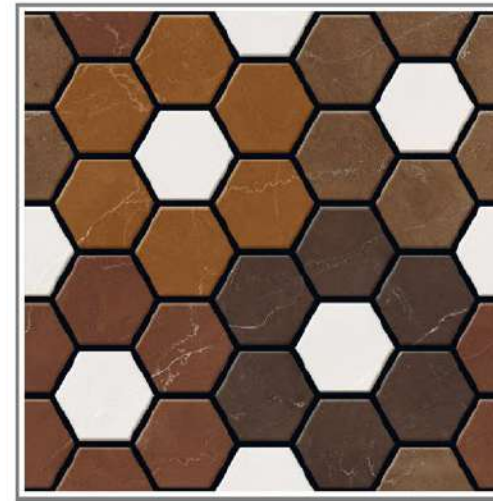


Design No.: 586

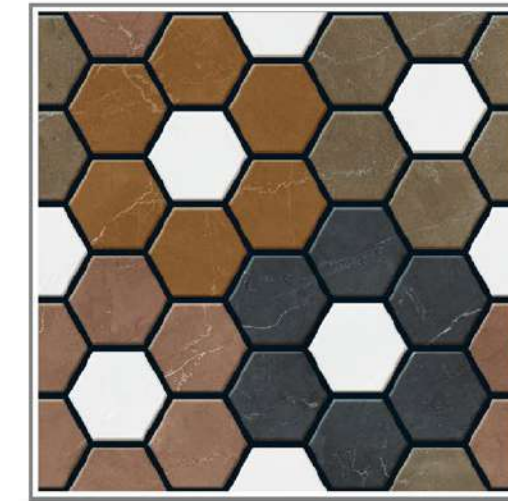
- Easy to install
- Resistant to Staining
- Thermal shock resistant
- Ecology & Sustainable
- Acid resistant
- Easy to clean
- Anti-slip
- Resistant to Abrasion
- High Mor
- Impact resistant
- Frost resistant

THICKNESS
9.5 MM

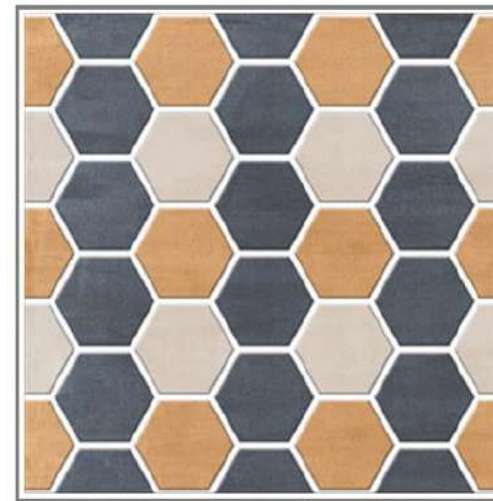
SIZE
300x
300 MM



Design No.: 543



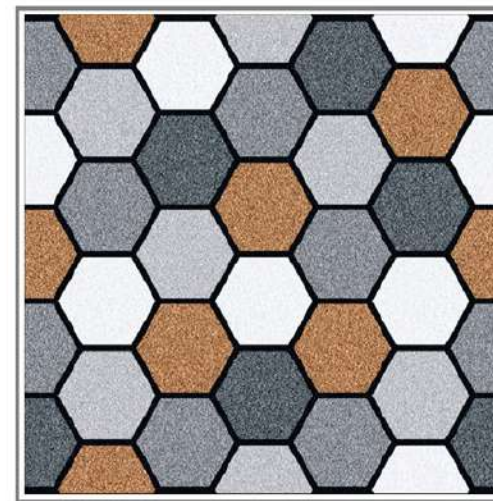
Design No.: 545



Design No.: 546



Design No.: 547

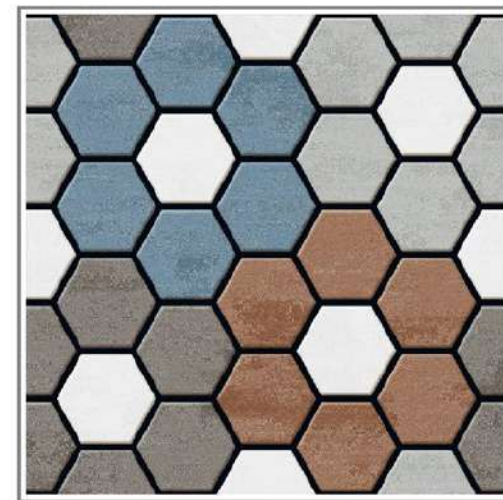


Design No.: 580



Design No.: 581

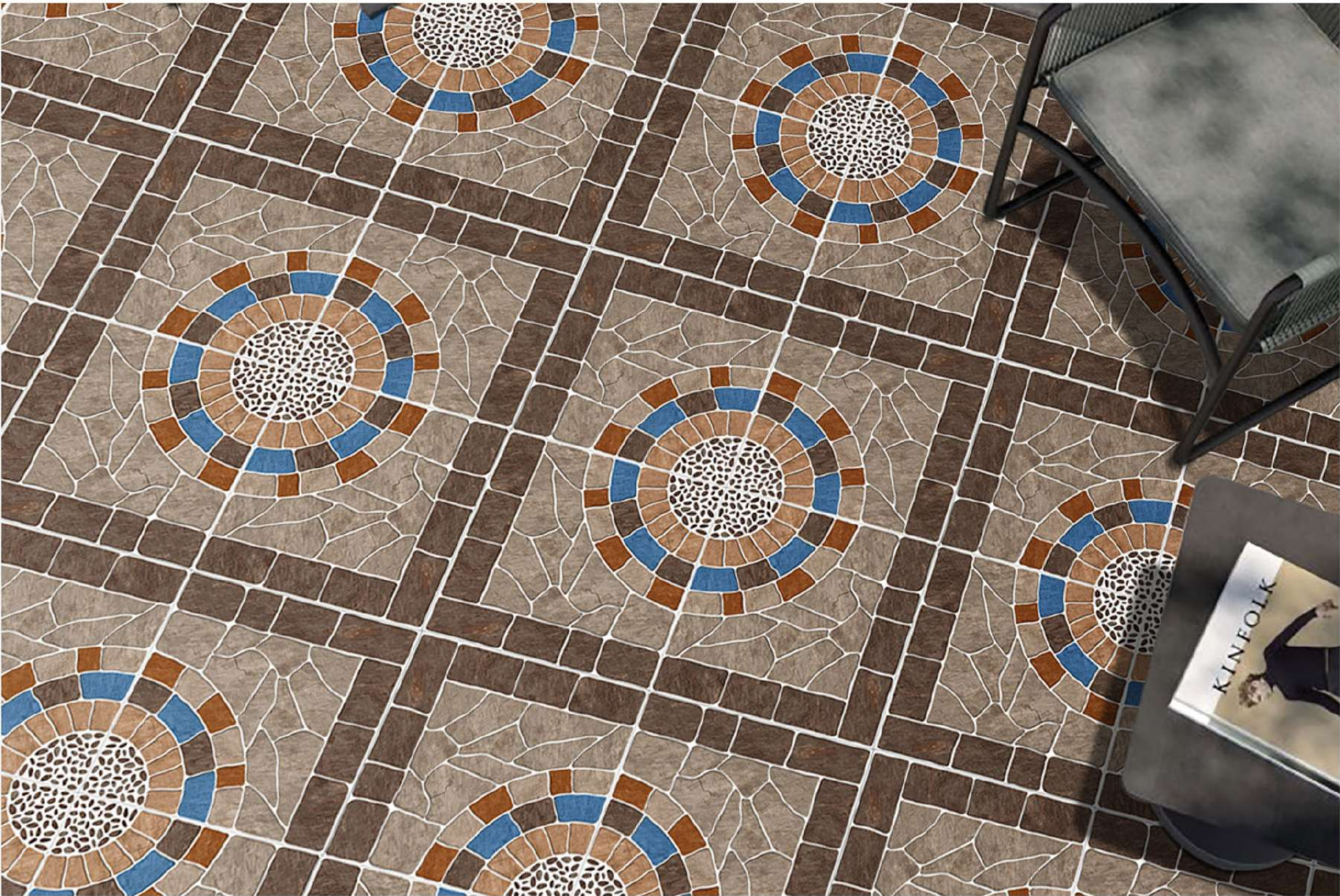
- Easy to install
- Resistant to Staining
- Thermal shock resistant
- Ecology & Sustainable
- Acid resistant
- Easy to clean
- Anti-slip
- Resistant to Abrasion
- High Mor
- Impact resistant
- Frost resistant



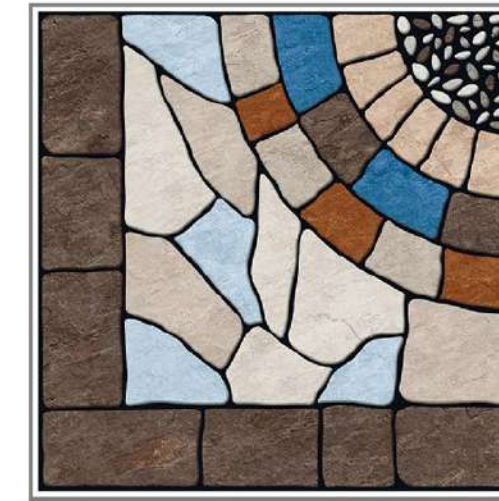
Design No.: 544

THICKNESS
9.5 MM

SIZE
300x
300 MM



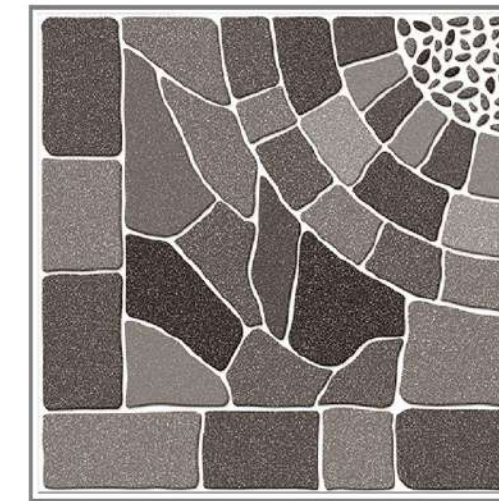
Design No.: 548



Design No.: 550



Design No.: 551



Design No.: 552

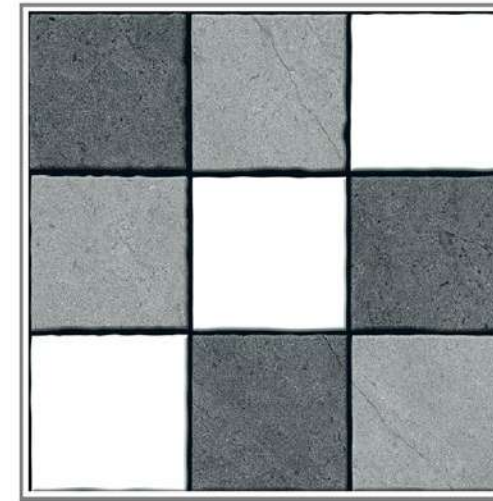
- Easy to install
- Resistant to Staining
- Thermal shock resistant
- Ecology & Sustainable
- Acid resistant
- Easy to clean
- Anti-slip
- Resistant to Abrasion
- High Mor
- Impact resistant
- Frost resistant



Design No.: 549

THICKNESS
9.5 MM

SIZE
300x
300 MM



Design No.: 592



Design No.: 593



Design No.: 594



Design No.: 595



Design No.: 596

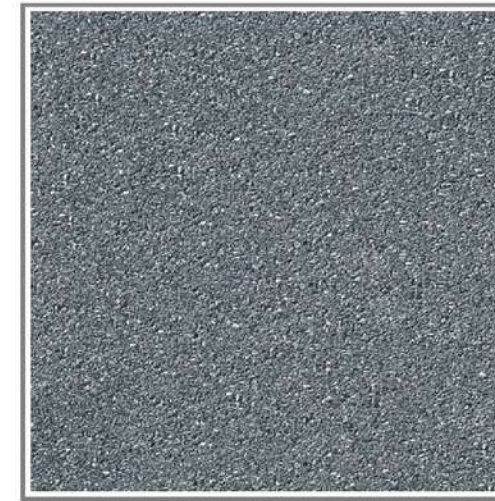
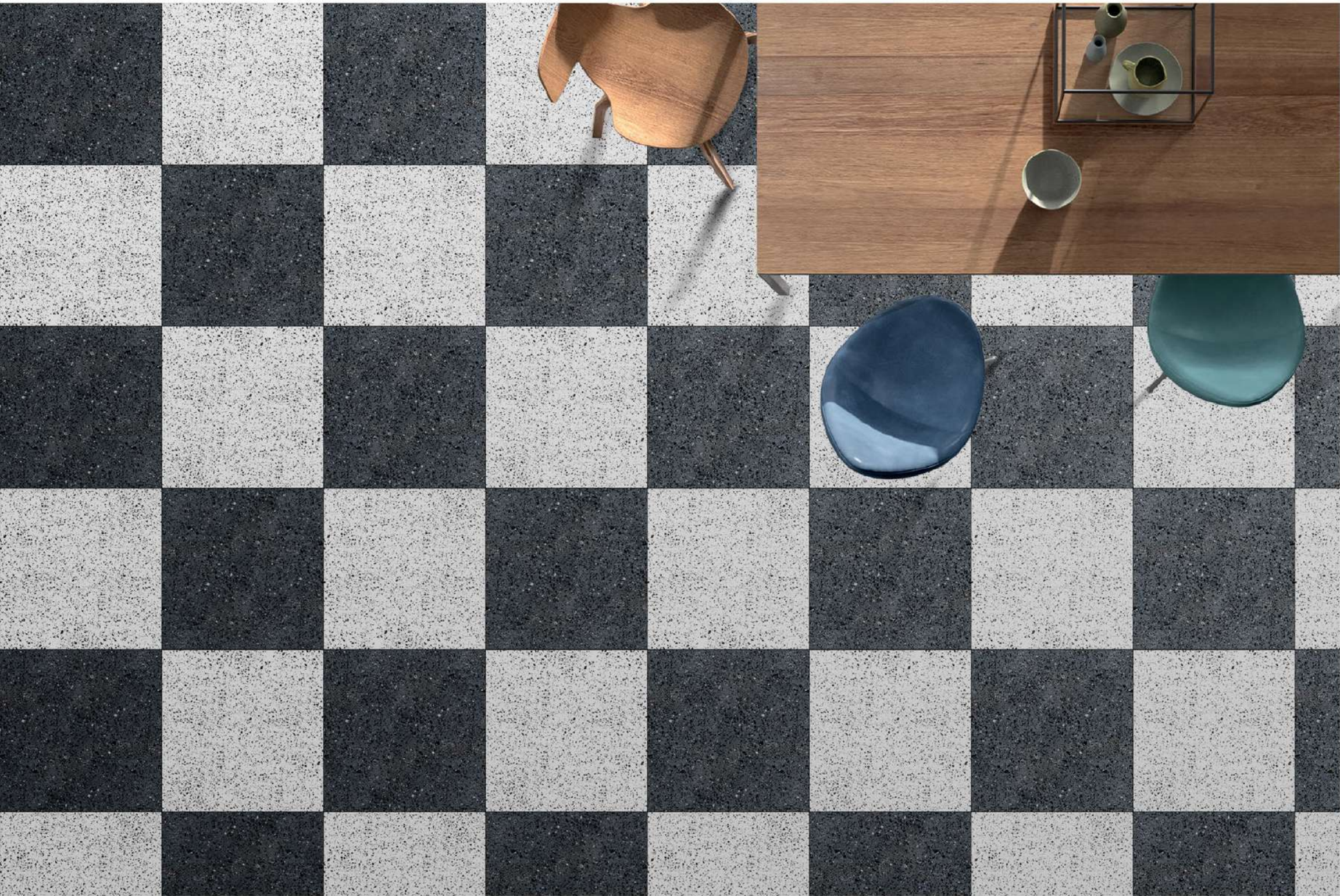
- Easy to install
- Resistant to Staining
- Thermal shock resistant
- Ecology & Sustainable
- Acid resistant
- Easy to clean
- Anti-slip
- Resistant to Abrasion
- High Mor
- Impact resistant
- Frost resistant



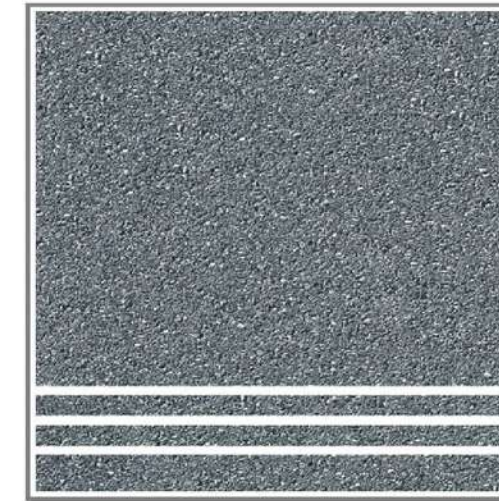
Design No.: 591

THICKNESS
9.5 MM

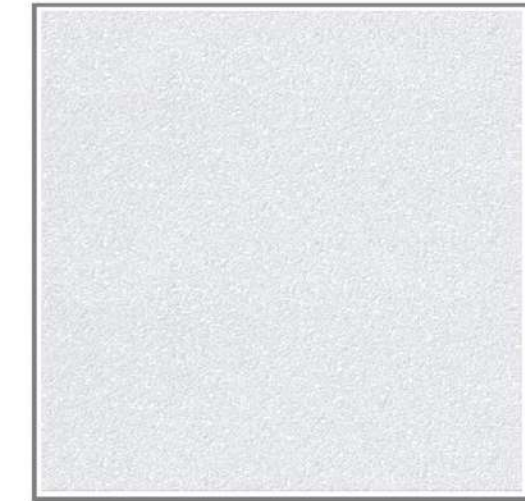
SIZE
300x
300 MM



Design No.: 601-D



Design No.: 601-ST



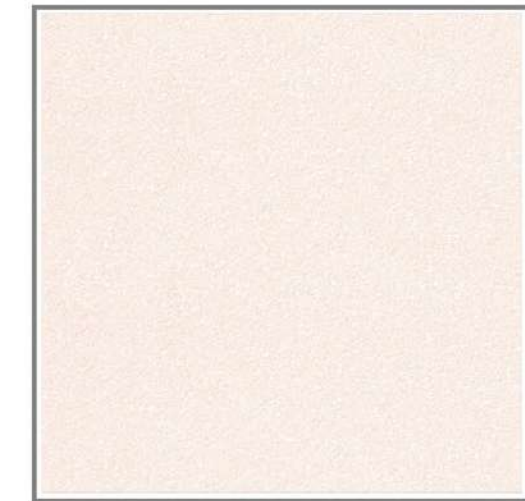
Design No.: 601-L



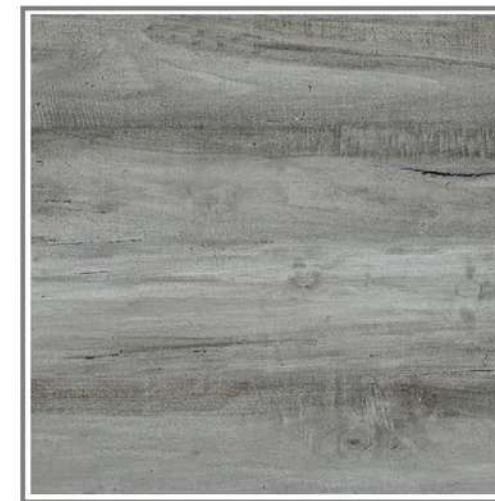
Design No.: 602-D



Design No.: 602-ST



Design No.: 602-L



Design No.: 603-D



Design No.: 603-ST



Design No.: 603-L



Design No.: 604-D



Design No.: 604-ST

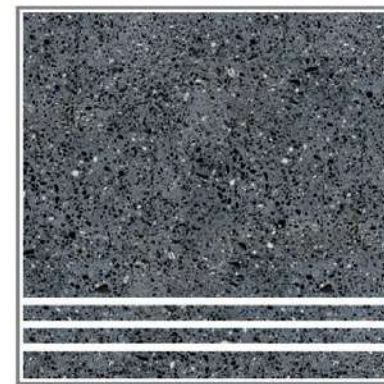


Design No.: 604-L

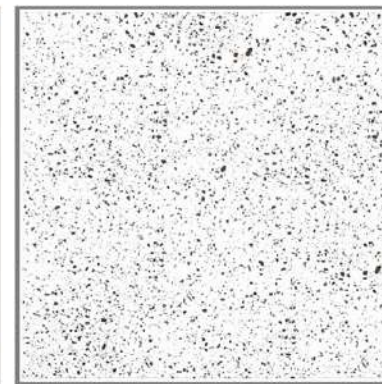
- Easy to install
- Resistant to Staining
- Thermal shock resistant
- Ecology & Sustainable
- Acid resistant
- Easy to clean
- Anti-slip
- Resistant to Abrasion
- High Mor
- Impact resistant
- Frost resistant



Design No.: 615-D



Design No.: 615-ST



Design No.: 615-L



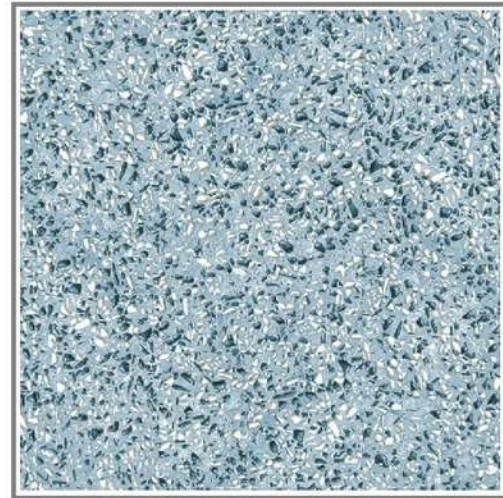
Design No.: 605-D



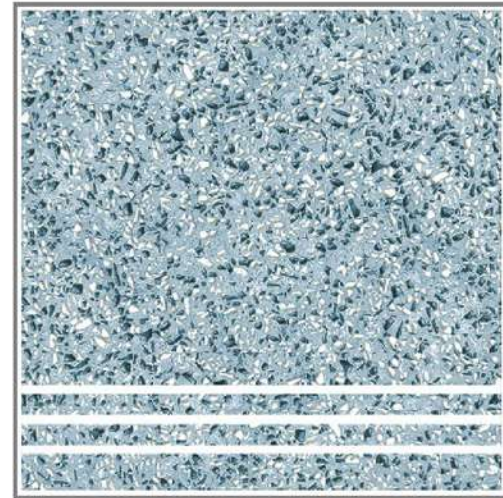
Design No.: 605-ST



Design No.: 605-L



Design No.: 606-D



Design No.: 606-ST



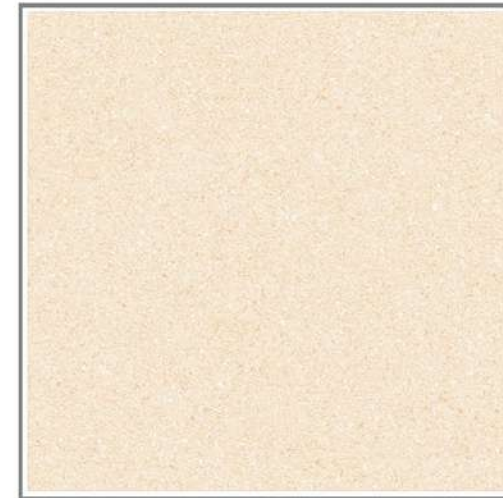
Design No.: 606-L



Design No.: 607-D



Design No.: 607-ST



Design No.: 607-L



Design No.: 608-D



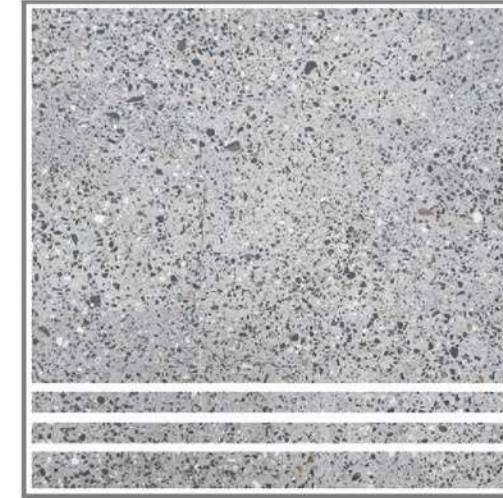
Design No.: 608-ST



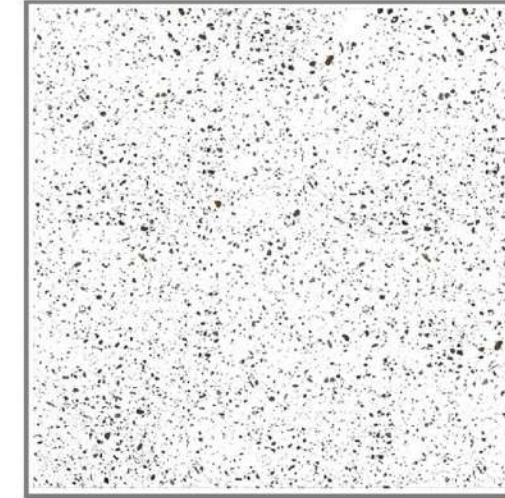
Design No.: 607-L



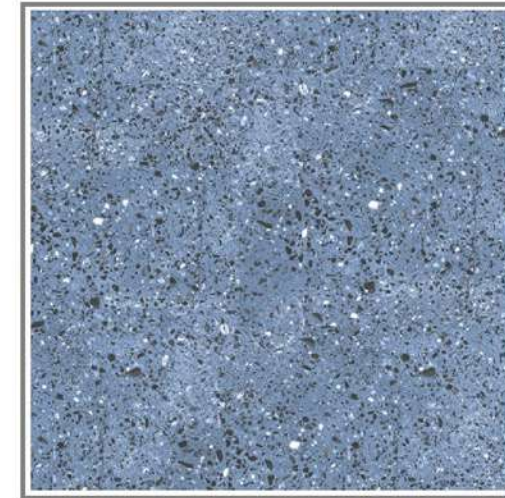
Design No.: 616-D



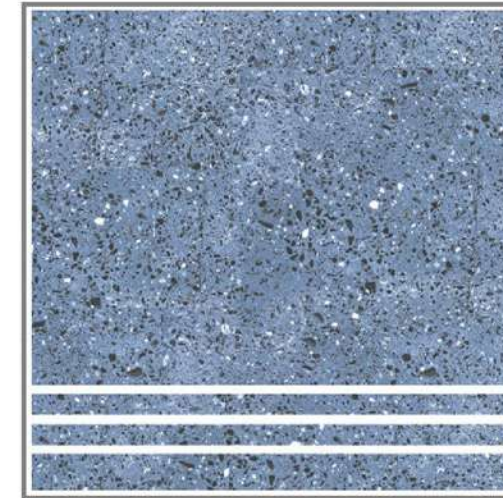
Design No.: 616-ST



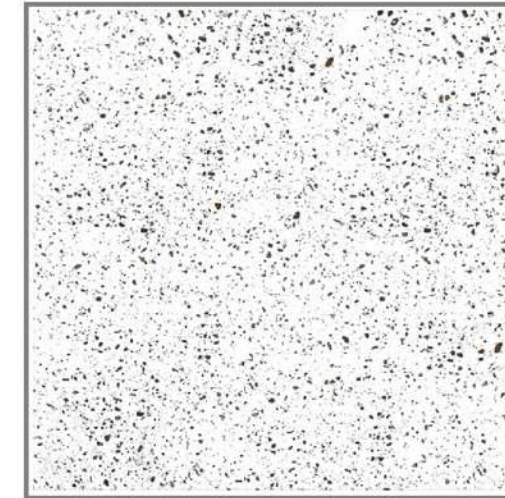
Design No.: 615-L



Design No.: 617-D



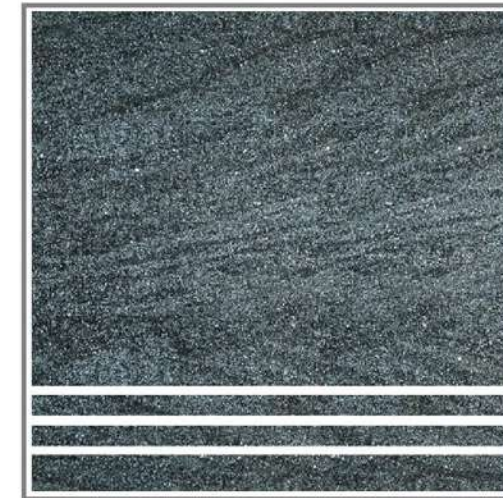
Design No.: 617-ST



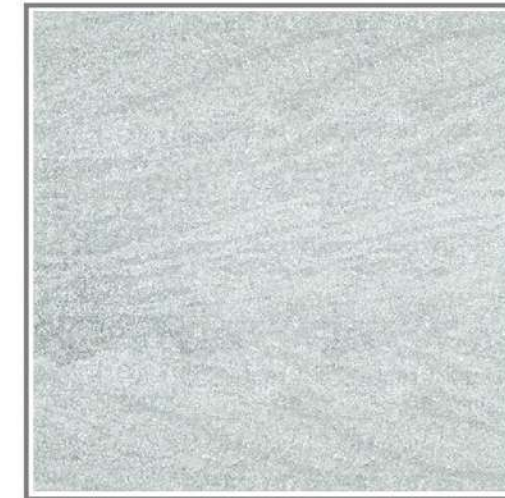
Design No.: 615-L



Design No.: 618-D



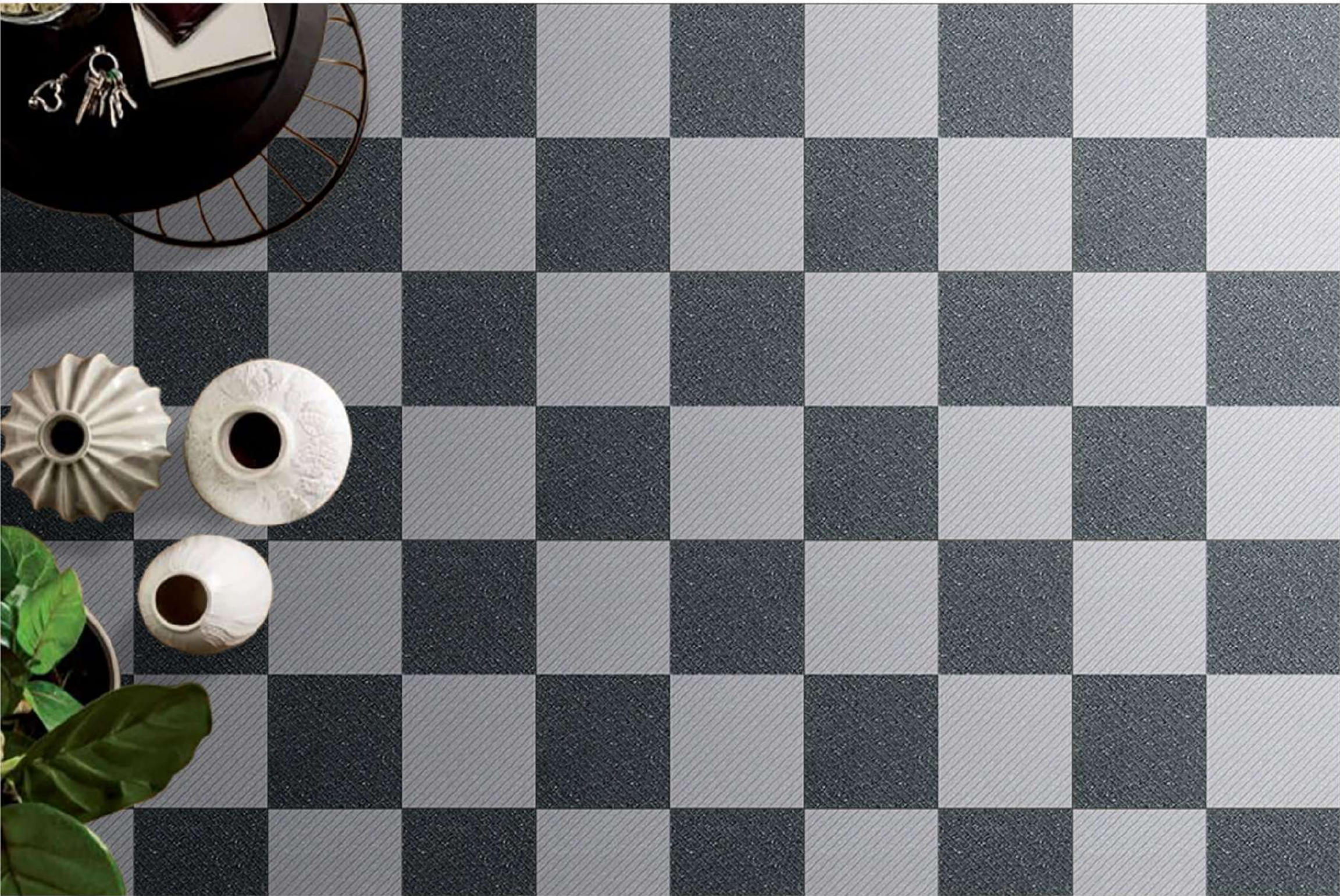
Design No.: 618-ST



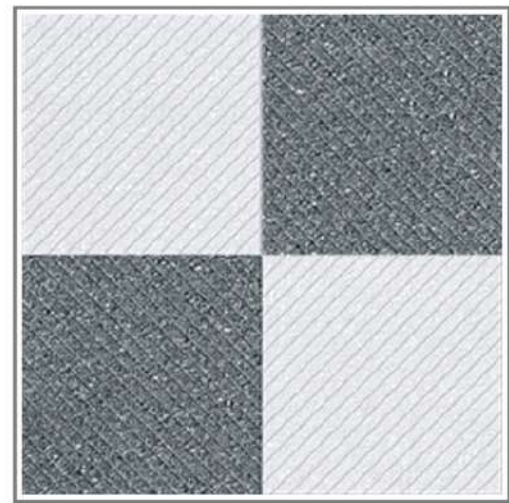
Design No.: 618-L

THICKNESS
9.5 MM

SIZE
300x
300 MM



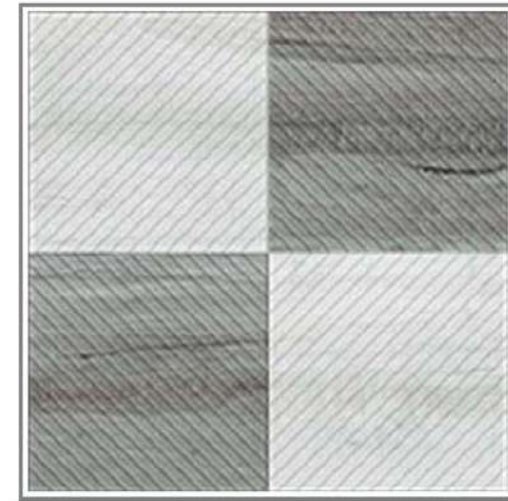
- Easy to install
- Resistant to Staining
- Thermal shock resistant
- Ecology & Sustainable
- Acid resistant
- Easy to clean
- Anti-slip
- Resistant to Abrasion
- High Mor
- Impact resistant
- Frost resistant



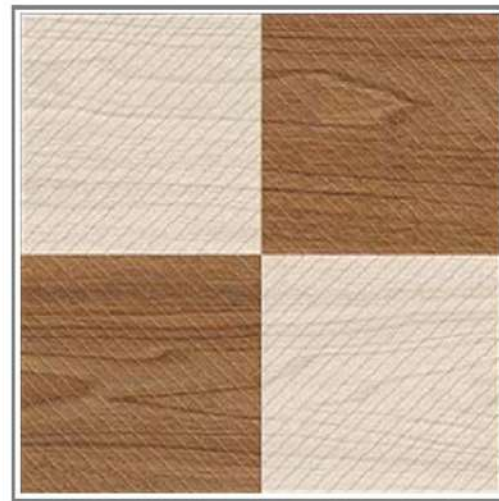
Design No.: 701



Design No.: 702



Design No.: 703



Design No.: 704



Design No.: 705



Design No.: 706

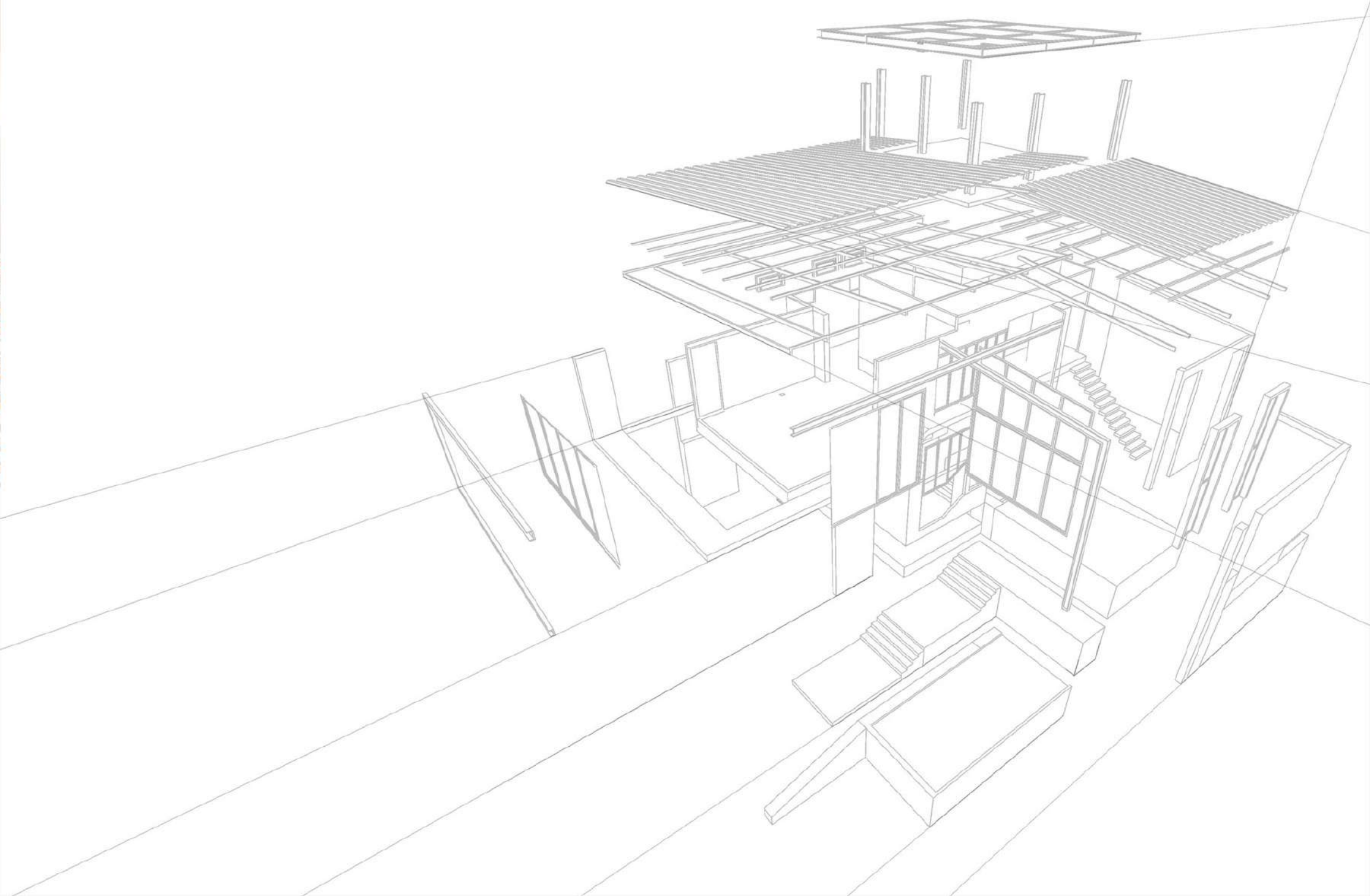
THICKNESS
9.5 MM

SIZE
300x
300 MM

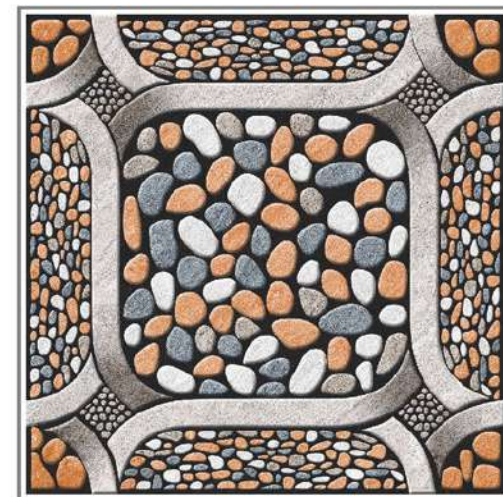


PACKAGING DETAILS:

Size	Thickness	Area	Pcs.	Wight(Approx)
300x300 MM	9.5 MM	0.72 Sq. Mtr.	8	14 Kg



- Easy to install
- Ecology & Sustainable
- Anti-slip
- Impact resistant
- Resistant to Staining
- Acid resistant
- Resistant to Abrasion
- Frost resistant
- Thermal shock resistant
- Easy to clean
- High Mor



Design No.: 710



Address:

8-A, National Highway, Lakhdhirpur Road,
Opp. Grand Vaibhav Hotel, Morbi - 363 642. (Guj. - IND)

E-mail: info@sahebc ceramic.com | **Web:** www.sahebc ceramic.com

FAX: +91-2822-241222 | **Contact No.:** +91 98258 29503